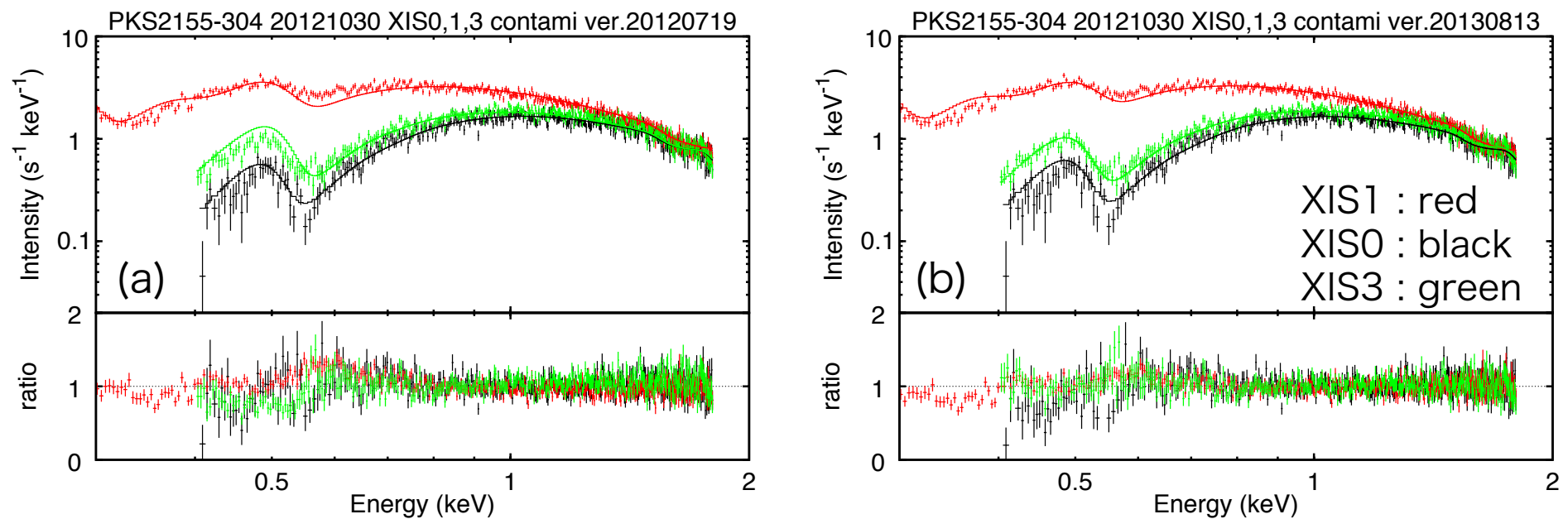


Update of XIS contamination model (1) chemical composition

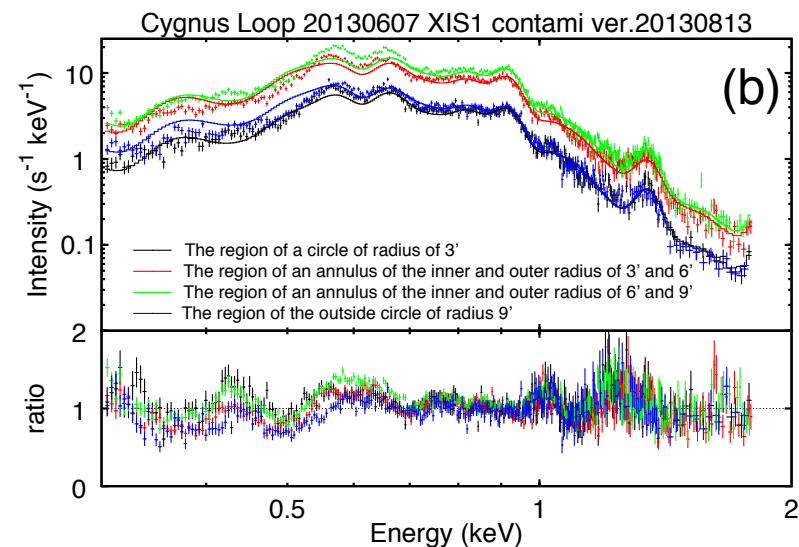
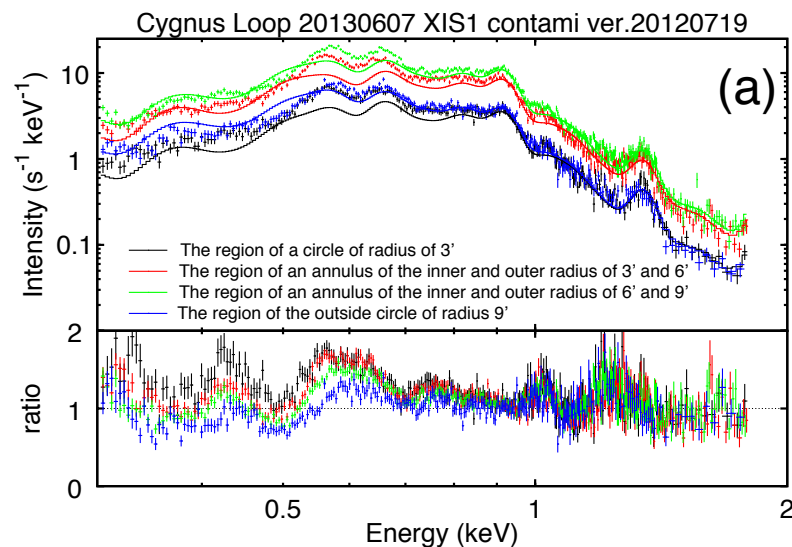
- The XIS0-3 contamination models (ae_xi*_contami_?????.fits) were updated to better represent the changes in the low energy response.
- The time dependence of the chemical composition at the XIS center was revised by adding new data since previous release, etc.
- `xissimarfgen` uses the latest contami files automatically. Use the `contamifile` option to use previous versions if necessary.



PKS2155-304 (2012/10/30) fitting with (a) old and (b) new contami model.

Update of XIS contamination model (2) spatial distribution

- The XIS0-3 contamination models (ae_xi?_contami_?????.fits) were updated to better represent the changes in the low energy response.
- The spatial model; $N(r,t)=N(r=0,t)/\{1+(r/A)^B\}$, in which N is the column density of each chemical component, r is off-axis angle, t is time, and A & B are free parameters. The parameters were revised by (i) using the revised chemical composition at $r=0$ and (ii) adding new data since previous release, etc.
- `xissimarfgen` uses the latest `contami` files automatically. Use the `contamifile` option to use previous versions if necessary.



Cygnus Loop (2013/06/07) fitting with (a) old and (b) new contami model.